

客户
CUSTOMER 鑫源洋

承认书
SPECIFICATION FOR APPROVAL

RoHS

客户料号 CUSTOMER PN	
DDK P/N	PQ32/20-JP4
承认书编号 SPEC NO	
版本号 REV NO	A0
日期 DATE	2017.10.26

客户认可
APPROVED BY:

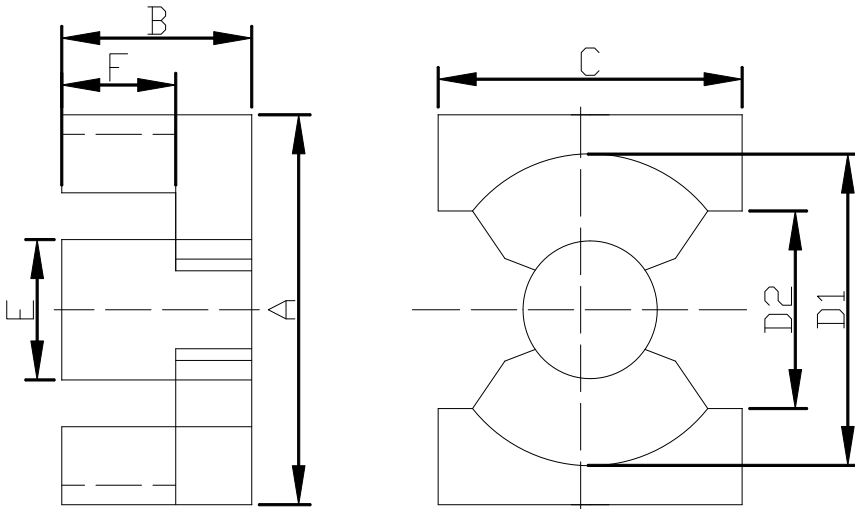
承 认 书
SPECIFICATION FOR APPROVAL

客户 CUSTOMER	鑫源洋		
客户料号 CUSTOMER PN		DDK P/N	PQ32/20-JP4
1.变更记录 REVISION RECORD:			
版本号 REV NO	更改内容及原因 CONTENTS AND REASONS	日期 DATE	担当 DRAWN
A0	新规格 The new specifications	2017.10.26	刘琴燃

客户 CUSTOMER	鑫源洋	客户料号 CUSTOMER PN		版本号 REV NO	A0
----------------	-----	---------------------	--	---------------	----

DDK P/N	PQ32/20-JP4	日期 DATE	2017.10.26		
---------	-------------	------------	------------	--	--

2.尺寸 DIMENSIONS(mm)



尺寸 DIMENSIONS(mm)

A	32.00±0.60
B	10.30±0.30
C	22.00±0.45
D1	26.90 MIN
D2	19.70 MIN
E	13.40±0.30
F	5.80±0.30

磁芯参数 CORE PARAMETERS

有效磁路长度 Effective Length Le	54.29mm
有效截面积 Effective Cross Area Ae	162.65mm ²
有效体积 Effective Volume Ve	8830.3mm ³
磁芯系数 Permeance Factor(C1)	0.33mm ⁻¹

批准 APPROVED BY	审核 CHECKED BY	拟制 PREPARED BY

客户 CUSTOMER	鑫源洋	客户料号 CUSTOMER PN		版本号 REV NO	A0
DDK P/N	PQ32/20-JP4		日期 DATE	2017.10.26	

3. 电气特性 ELECTRICAL CHARACTERISTICS

项目 ITEMS	规格 SPEC	测试条件 TESTING METHOD	测试仪器 TESTING INSTRUMENT
电感AL(nH/N ²) INDUCTANCE	7000±25%	1KHZ 0.25V 10TS	Chroma-3302 106X (25°C)
功率损耗(w) POWER LOSS	5.67MAX	100KHZ/200mT/10TS/100°C/144.43V	GHY-5

4. 材质特性 MATERIAL CHARACTERISTICS

材质 MATERIAL: JP4 以下数据为T25*15*10磁环测试所得

特性 CHARACTERISTICS	单位 UNIT	特性质 VALUE
初始导磁率 INITIAL PERMEABILTY ui		2300±25%
饱和磁通密度 SATURATION MAGNETIC FLUX DENSITY(H=1194A*M) Bs	25°C	mT 510
	100°C	mT 390
剩余磁通密度 REMANENT FLUX DENSITY Br	25°C	mT 95
	100°C	mT 55
矫顽力 COERCIVE FROCE Hc	25°C	A/m 14.3
	100°C	A/m 8.8
居里温度 CURIETEMP Tc	-	°C ≥215
电阻率 ELECTRICAL RESISTIVITY p	-	Ω 6.5
密度 DENSITY d	-	kg/m ³ 4.8*10 ³

批准 APPROVED BY	审核 CHECKED BY	拟制 PREPARED BY

客户 CUSTOMER	鑫源洋	客户料号 CUSTOMER P/N		版本号 REV NO	A0
DDK P/N	PQ32/20-JP4		日期 DATE	2017.10.26	

5.外观要求 Appearance Requirement

5.1.清洁度: 外表干净, 无水泽, 灰尘, 氧化铝等杂物;

Tidiness: Clean , no water stain, no foreign substances like dust, alumina and etc.

5.2.掉角 Chips

产品A 尺寸 Core Size (Dim. A)	功能面:Functional surface			非功能面: Non Functional Surface		
	最大面积(mm ²) Max Area	深度(mm) Depth	最大数量 Max Qty.	最大面积(mm ²) Max Area	深度(mm) Depth	最大数量 Max Qty.
≤10mm	0.6	0.3	2	1.0	0.5	2
10mm~20mm	1.0	0.3	2	2.0	0.5	2
20mm~30mm	1.5	0.3	2	2.5	0.8	3
>30	2.0	0.3	2	4.0	0.8	3

5.3.磁芯配合面上裂缝深度不超过0.5mm, 长度不超过延长线长度的1/4, 磁芯非配合面上裂缝深度不超过1.0mm, 长度不超过延长线长度的1/3.

The depth of crack in the ground surface be no more than 0.5mm,length is no more than 1/4,length of lengthen line,In the non-ground surface,the depth should beno more than1.0mm length is no more than 1/3 length of lengthen line.

5.4.毛刺: Bur(Flash)

5.4.1.不应有裸眼(视力1.5)能够见到的呈锯齿状的毛刺存在;

No visible ragged edges are allowed.

5.4.2.用手触摸检查时不允许有不光滑,扎手的毛刺存在;

No burrs can felt by bare hands are allowed.

5.4.3.长度:≤1/4 发生面边长。

Length of the burrs are supposed to be shorter than one fourth of the length of the core wherethe burrs occurred.

6. 检验方法 (Inspection Method) :

按GB/T2828.1-2003, 一次正常抽样, 检查水平II, AQL符合下列标准;

According to GB/T2828.1-2003,one time normal random sampling,Inspect lvevl II,AQL.should be as follows;

	抽验水准 (AQL)	检查项目Inspect Item
A	0.65	电气特性Electrical characteristics
B	1.0	尺寸size
C	1.5	外观appearance

备注:

1.以上标准之制定参照国际电工标准: IEC-60424, Above standards were made according to IEC-60424.

2. 以上标准未详见之处仍以IEC 电工标准为参照依据, Those not included in above standards may refer to IEC-60424.

3.上述文中的A 指的是产品外径, Dimension A mentioned above is referred to the outer dimension.

4.以上标准是JLW磁芯设计对外观外形的一般标准, 不包括客户的特殊要求。对于客户提出的有别于本标准之外的要求, 应与客户重新确认并文件化于产品规格承认书中。

Above standards are the general standards for the designing of the visual appearance of JLW ferrite cores. Customers' specific requirement other than those included above will be negotiated between JLW and customer and documented in the specification.

批准 APPROVED BY	审核 CHECKED BY	拟制 PREPARED BY

客户 CUSTOMER	鑫源洋	客户料号 CUSTOMER		版本号 REV NO	A0
DDK P/N	PQ32/20-JP4			日期 DATE	2017.10.26

项目(Project)	A	B	C	D1	D2	E	F	PC(w)	AL(nH/N ²)
中心 Center value	32.00	10.30	22.00	26.90	19.70	13.40	5.80	5.67	7000
上限 Limit	32.60	10.60	22.45			13.70	6.10	MAX	8750
下限 Lower limit	31.40	10.00	21.55	MIN	MIN	13.10	5.50		5250
1	31.98	10.27	21.92	27.18	19.55	13.45	5.79	3.83	6350
2	31.99	10.28	21.94	27.24	19.50	13.38	5.82	3.86	6950
3	31.89	10.25	21.91	27.18	19.60	13.41	5.81	3.82	6950
4	32.14	10.26	22.07	27.17	19.42	13.35	5.77	3.82	6940
5	31.88	10.28	22.01	27.16	19.65	13.44	5.88	3.85	6880
6	31.87	10.26	21.95	27.16	19.45	13.36	5.82		6740
7	32.18	10.26	22.11	27.16	19.50	13.35	5.75		6980
8	32.14	10.25	22.08	27.11	19.45	13.44	5.75		6980
9	32.15	10.29	22.00	27.25	19.35	13.37	5.76		6980
10	31.97	10.28	21.97	27.19	19.65	13.42	5.78		7100
平均值	32.02	10.27	22.00	27.18	19.51	13.40	5.79	3.84	6885
判定	OK	OK	OK	OK	OK	OK	OK	OK	OK

量具：数显卡尺 单位 (mm)

Measuring Tool: Digital Caliper: Unit (mm)

测试条件： 1KHz/0.25V ; 10TS

仪器： Chroma-3302 106X (25°C)

Test Conditions: 1KHz/0.25V ; 10TS

Instruments: Chroma-3302 106X (25°C)

备注 (Remarks) :

批准 APPROVED BY	审核 CHECKED BY	拟制 PREPARED BY

客户 CUSTOMER	鑫源洋	客户料号 CUSTOMER PN		版本号 REV NO	A0
DDK P/N	PQ32/20-JP4		日期 DATE	2017.10.26	

8.包装作业规范 SPECIFICATION PACKAGING OPERATIONS:

8.1. 内包装 INNER PACKING

机板规格尺寸及产品摆放方式 (Styrofoam box size and placement).

包装材料 Stuff Spec	规格 Size	所需数量 Pack Number
泡沫盒 Foam box		
纸箱 Carton box		

8.2. 产品重量 Product weight

单重 Singlet: 41.85g/set

净重 Net weight:

毛重 Gross weight:

批准 APPROVED BY	审核 CHECKED BY	拟制 PREPARED BY