

客户名称 CUSTOMER: 深圳鑫源洋电子有限公司

产 品 承 认 书

SPECIFICATION FOR APPROVAL

客户型号 CUSTOMER P/N: _____

产品名称 TianYuan P/N : _____ PQ2216

材 料 Material : _____ TY44

日 期 Date : _____ 2017-10-11

目 录 LIST

Page 1 ----- 封面 cover

Page 2 ----- 更改记录 Rework noted

Page 3 ----- TY44 材料特性 TY44 characteristic

Page 4 ----- TY44 材料特性曲线 TY44 curve

Page 5 -7----- 性能及参数 characteristic & parameters

客户确认 Customer ratity			供应方确认 Serve ratity		
批 准 APPROVED	承认签章 BADGING	客户编码 NUMBER	拟制 REPORT	审核 CHECKED	批准 APPROVED
			朱蓉蓉	高庞	许平金

注: 本承认书必须经过客户盖章签字才生效

The recognition of the book must be signed by the customer and the signature to take effect

承制方: 苏州天源磁业股份有限公司 Suzhou Tianyuan magnetic industry Limited by Share Ltd

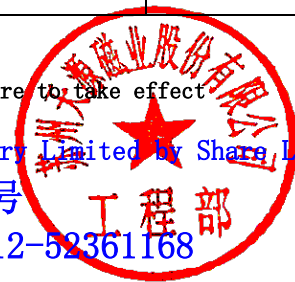
地 址: 江苏省常熟市虞山高新技术产业园四新路 18 号

电 话 TEL: 0512-52361788

传 真 FAX: 0512-52361168

网 址: www.sztycore.com

E-mail: xyf@sztycore.com



TY44 材料特性

TY44 material characteristic

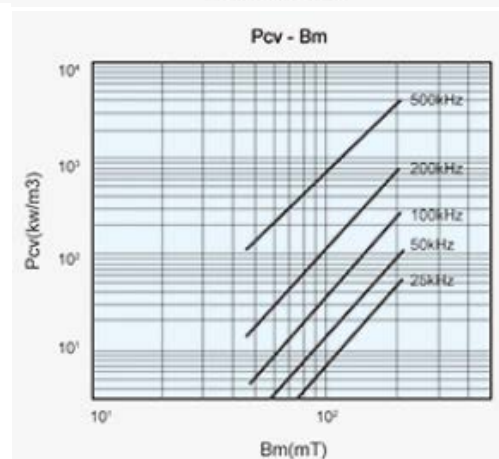
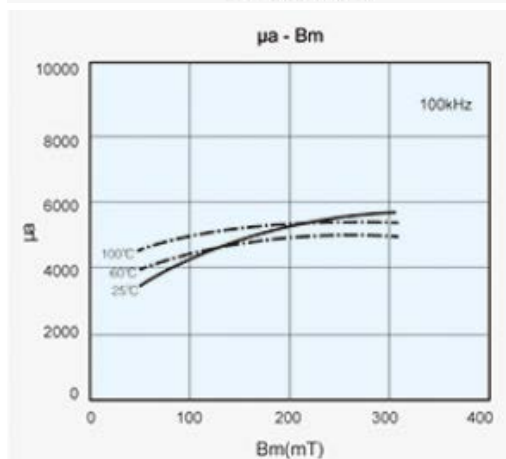
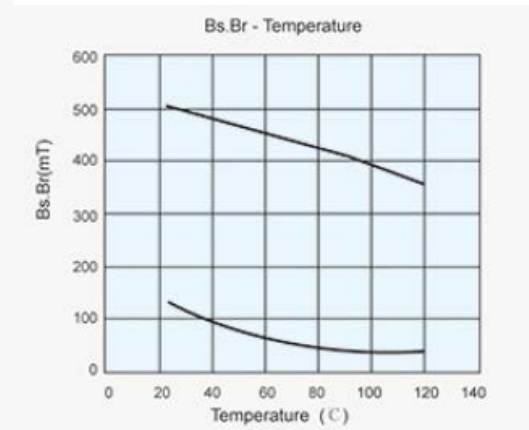
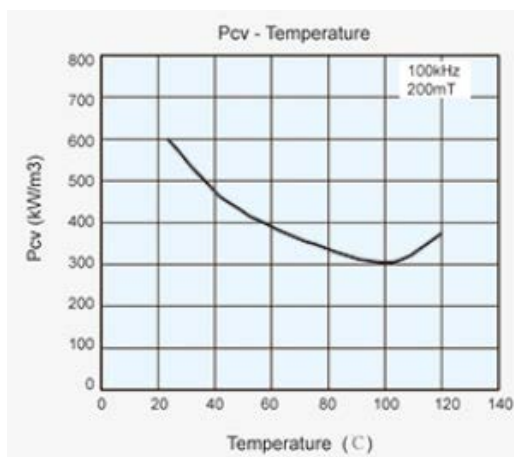
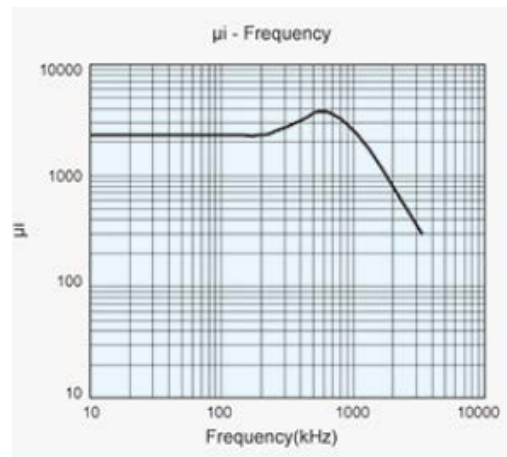
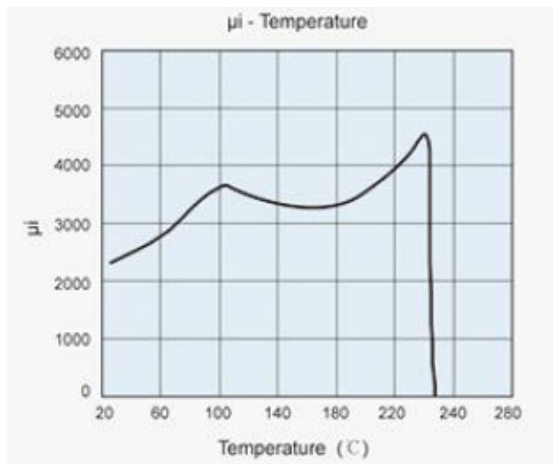
特性 Characteristics	测试条件 Conditions	符号 symbol	单位 unit	标称值 Value
初始磁导率 Initial Permeability	10KHz 25℃	μ_i	/	2400±25%
振幅磁导率 Amplitude Permeability	/	μ_a	/	3000min
饱和磁通密度 Saturation magnetic flux density (H=1194A/m)	10KHz 25℃	Bs	mT	510
	10KHz 100℃			390
剩磁 Remanence (H=1194A/M)	10KHz 25℃	Br	mT	110
	10KHz 100℃			60
矫顽力 Coercivity (H=1194A/M)	10KHz 25℃	Hc	A/m	13
	10KHz 100℃			6.5
功率损耗 Power loss 100KHz 200mT 正弦波	25℃	Pcv	KW/m ³	600
	60℃			400
	80℃			320
	100℃			300
	120℃			380
居里温度 Curie temperature	/	Tc	℃	≥215
电阻率 Electrical resistivity	/	ρ	$\Omega\cdot m$	6.5
密度 Density	/	d	g/cm ³	4.8

注：各表格所列无公差和范围要求的值均用标准环型磁心所测得的典型值，不包括客户的特殊要求，有特殊要求时，应在订单或协议中明确提出。

Remark: The value of materials characteristics, which have no other requirement on the tolerance, are typical value. Please contact our company for special characteristics in your order or agreement.

TY44材料特性曲线

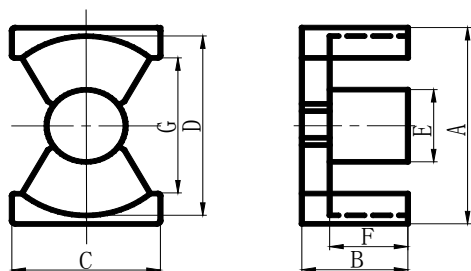
TY44material characteristic curve



性能及参数

characteristic & parameters

一、产品尺寸 (Product size: Dimensions (mm))



项目 Item	标准 Spec
A	22.20±0.45
B	8.30±0.20
C	14.00±0.30
D	19.20min
E	8.80±0.20
F	5.40±0.20
G	14.80min

二、磁芯有效参数 Core Effective parameters (此项参数仅作参考值)

磁芯常数 Core factor	$C_1 : 0.668$	mm^{-1}
有效磁路长度 Effective magnetic path length	$L_e : 39.9$	mm
有效截面面积 Effective cross section area	$A_e : 59.7$	mm^2
有效体积 Effective volume	$V_e : 2380$	mm^3
重量 weight	$W_g : \approx 13.10$	g/set

三、电气特性参数 Electrical characteristics

项目 Item	标准 Spec	线圈规格 Loop Spec.	测试条件 Test Conditions	测试仪器 Instrument
电感系数 Inductance factor	$AL=3200 \pm 25\% \text{ nH/N}^2$	$\phi 0.23 \times 10\text{T}$	1KHz, 0.3V; 25±3℃ 配对方式: 平面+平面	TH2828S 或同等仪器

性能及参数

characteristic & parameters

四、外观要求 (APPEARANCE REQUIREMENTS):

1、表面光洁、色泽均匀，无影响使用的毛刺。

The burr with the smooth surface and uniform color, have no impact on its usage.

2、无影响磁芯电磁性能和机械强度的裂纹，起层，气孔。

The layers, cracks and pin holes with no impact on the ferrite's permeability and Mechanical strength.

3、对于磁芯的掉块，配合面的大小不超过所在面线性长度的 1/10，非配合面的大小不超过所在面线性长度的 1/8，两者的深度不超过 0.4mm，数量分别不超过二处，配合面上总掉块面积不超过 2.0mm²，非配合面上总掉块面积不超过 3.0mm²。

The chips on the ground surface, its length shouldn't be more than 1/10 length of its direction extend line on the same surface. The chips on the other surface, its length shouldn't be more than 1/8 length of its direction extend line on the same surface. The depth of all the chips shouldn't be more than 0.4mm. the quantity of the chips shouldn't be more than 2 points. The area of the chips on the ground surface of the chips on the other surface shouldn't be more than 3.0mm².

4、对于磁芯的开裂，开裂的宽度不超过 0.1mm，长度不超过同向长度的 1/5，数量不超过 1 处，并且不影响其磁芯的电气性能和机械强度。

The crack on the core its width shouldn't be more than 0.1mm, its length shouldn't be more than 1/5 length of its direction extend line on the same surface. The quantity of the crack on the core shouldn't be more than one point and this crack shouldn't influence any electromagnetic and mechanical strength properties.

5、检验方式:采用目测(或与标样比较)和精度不低于 0.02mm 的卡尺检查。

Test method: Taking the eyeballing (or comparing with the standard sample) and inspecting the calipers with its accuracy no lower than 0.02mm.

性能及参数

characteristic & parameters

五、其它: Other

1、包装规格及运输方式: (Packaging and Traffic)

(1)包装规格内容包括: consist of pack:

- ① 泡沫包装: 内包装采用泡塑料盒, 外包装采用纸箱, 纸箱侧面标明: 材质、型号、数量及 ROHS 标示。

Inside: toam; Outside: carton box, marked: material, type, amount and ROHS.

- ② 外箱标示符号: Outside marked:

小心轻放、向上、防潮、防撞(易碎)等储运符号。

Be careful of discharge, up, nodamping, nobamping, etc.

- ③ 外箱标示内容: 产品型号(苏州天源磁业股份有限公司型号)、材质、生产日期、数量、批号、IQC 号、重量; 苏州天源磁业股份有限公司名称、商标或品牌。

Outside box marked: product type, material, date, amount, batch, IQC, weight, trademark etc.

(2)运输方式: Traffic

产品运输的方式: 陆运。(Use of truck)

2、样品测试数据: (Sample test data)

样品测试数据的内容: 产品尺寸, 电气特性(功耗特性, 电感量)测试数据。

Sample test data: Product size, Electrical characteristics (Power loss, Inductance)

3、出货检验抽样标准及允收标准 GB2828 正常检查一次抽样方案一般检查水平 II 类。

Delivery evaluation for spot-check and permitted standard GB2828 normal inspection in one spot-check II level Class.

项 目 Item	Inspect Item	AQL
电磁性能	Electromagnetic Property	0.65
尺 寸	Outside Size	1.0
外 观	Outside Quality	1.5