

客户 鑫源洋  
CUSTOMER

承认书  
SPECIFICATION FOR APPROVAL



|                      |                       |
|----------------------|-----------------------|
| 客户料号<br>CUSTOMER P/N |                       |
| DDK P/N              | <b>EE18/15/6-JP95</b> |
| 承认书编号<br>SPEC NO     |                       |
| 版本号<br>REV NO        | <b>A0</b>             |
| 日期<br>DATE           | <b>2017/9/28</b>      |

客户认可  
APPROVED BY:

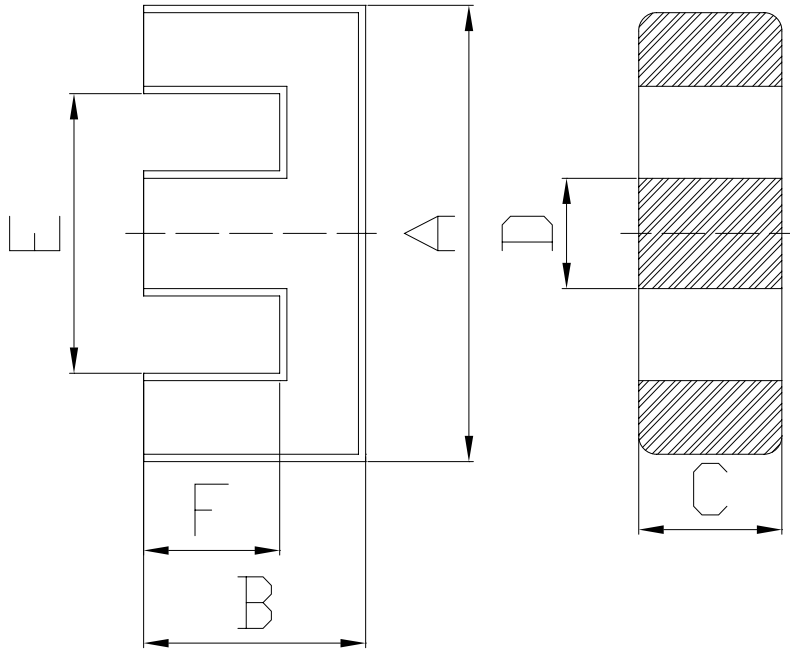
**承 认 书**  
SPECIFICATION FOR APPROVAL

|                         |                                 |            |                |
|-------------------------|---------------------------------|------------|----------------|
| 客户<br>CUSTOMER          | 鑫源洋                             |            |                |
| 客户料号<br>CUSTOMER P/N    |                                 | DDK P/N    | EE18/15/6-JP95 |
| 1.变更记录 REVISION RECORD: |                                 |            |                |
| 版本号<br>REV NO           | 更改内容及原因<br>CONTENTS AND REASONS | 日期<br>DATE | 担当<br>DRAWN    |
| A0                      | 新规格 The new specifications      | 2017.09.28 | 刘琴燃            |
|                         |                                 |            |                |
|                         |                                 |            |                |

|                |     |                      |  |               |    |
|----------------|-----|----------------------|--|---------------|----|
| 客户<br>CUSTOMER | 鑫源洋 | 客户料号<br>CUSTOMER P/N |  | 版本号<br>REV NO | A0 |
|----------------|-----|----------------------|--|---------------|----|

|         |                |            |           |  |  |
|---------|----------------|------------|-----------|--|--|
| DDK P/N | EE18/15/6-JP95 | 日期<br>DATE | 2017/9/28 |  |  |
|---------|----------------|------------|-----------|--|--|

2.尺寸 DIMENSIONS(mm)



尺寸 DIMENSIONS(mm)

|   |            |
|---|------------|
| A | 18.30±0.40 |
| B | 7.50±0.20  |
| C | 6.00±0.25  |
| D | 5.50±0.20  |
| E | 12.40 MIN  |
| F | 4.15±0.20  |
|   |            |
|   |            |
|   |            |
|   |            |
|   |            |

磁芯参数 CORE PARAMETERS

|                               |                        |
|-------------------------------|------------------------|
| 有效磁路长度 Effective Length Le    | 33.24mm                |
| 有效截面积 Effective Cross Area Ae | 35.3mm <sup>2</sup>    |
| 有效体积 Effective Volume Ve      | 1175.95mm <sup>3</sup> |
| 磁芯系数 Permeance Factor(C1)     | 0.94mm <sup>-1</sup>   |

|                   |                  |                   |
|-------------------|------------------|-------------------|
| 批准<br>APPROVED BY | 审核<br>CHECKED BY | 拟制<br>PREPARED BY |
|                   |                  |                   |

|                |                |                      |            |               |    |
|----------------|----------------|----------------------|------------|---------------|----|
| 客户<br>CUSTOMER | 鑫源洋            | 客户料号<br>CUSTOMER P/N |            | 版本号<br>REV NO | A0 |
| DDK P/N        | EE18/15/6-JP95 |                      | 日期<br>DATE | 2017/9/28     |    |

### 3. 电气特性 ELECTRICAL CHARACTERISTICS

| 项目<br>ITEMS                             | 规格<br>SPEC | 测试条件<br>TESTING METHOD        | 测试仪器<br>TESTING INSTRUMENT |
|---|------------|-------------------------------|----------------------------|
| 电感AL (nH/N <sup>2</sup> )<br>INDUCTANCE | 2800±25%   | 1KHZ 0.3V 10Ts                | Chroma-3302 320X(25°C)     |
| 功率损耗(w)<br>POWER LOSS                   | 0.70 MAX   | 100KHZ/200mT/10TS/100°C/31.4V | GHY/5                      |
|   |            |                               |                            |
|   |            |                               |                            |

### 4. 材质特性 MATERIAL CHARACTERISTICS

材质 MATERIAL: JP95 以下数据为T25\*15\*10磁环测试所得

| 特性 CHARACTERISTICS                                       | 单位 UNIT | 特性质 VALUE                             |
|--|---------|---------------------------------------|
| 初始导磁率<br>INITIAL PERMEABILTY ui                          |         | 3300±25%                              |
| 饱和磁通密度 SATURATION MAGNETIC<br>FLUX DENSITY(H=1194A*M) Bs | 25°C    | mT 530                                |
|  | 100°C   | mT 410                                |
| 剩余磁通密度<br>REMANENT FLUX DENSITY Br                       | 25°C    | mT 85                                 |
|  | 100°C   | mT 60                                 |
| 矫顽力<br>COERCIVE FROCE Hc                                 | 25°C    | A/m 9.5                               |
|  | 100°C   | A/m 6.5                               |
| 居里温度<br>CURIETEMP Tc                                     | -       | °C ≥215                               |
| 电阻率<br>ELECTRICAL RESISTIVITY p                          | -       | Ω 6.0                                 |
| 密度<br>DENSITY d  | -       | kg/m <sup>3</sup> 4.9*10 <sup>3</sup> |

|                   |                  |                   |
|-------------------|------------------|-------------------|
| 批准<br>APPROVED BY | 审核<br>CHECKED BY | 拟制<br>PREPARED BY |
|                   |                  |                   |

|                |                |                      |            |               |    |
|----------------|----------------|----------------------|------------|---------------|----|
| 客户<br>CUSTOMER | 鑫源洋            | 客户料号<br>CUSTOMER P/N |            | 版本号<br>REV NO | A0 |
| DDK P/N        | EE18/15/6-JP95 |                      | 日期<br>DATE | 2017/9/28     |    |

**5. 允许最大缺陷（外观） MAXIMUM CHIP OFF:**

5.1. 磁芯配合面上裂缝深度不超过0.3mm，长度不超过延长线长度的1/4，磁芯非配合面上裂缝深度不超过0.3mm，长度不超过延长线长度的1/3.

The depth of crack in the ground surface be no more than 0.3mm,length is no more than 1/4,length of lengthen line,In the non-ground surface,the depth should beno more than0.5mm length is no more than 1/3length of lengthen line.

5.2. 对于磁芯的外观检验方面，执行如下标准规格:

For the core aspects of the appearance inspection, perform the following standard specifications:

|   |   | 接合面<br>(Joints)     | 其他表面<br>(Other surface) |
|---|---|---------------------|-------------------------|
| 破损 (Damaged)  | 1处破损的面积 (A damaged area)                    | ≤0.7mm <sup>2</sup> | ≤1.0mm <sup>2</sup>     |
|   | 2处以上破损面积的合计 (Two or more total damage area) | ≤1.0mm <sup>2</sup> | ≤1.5mm <sup>2</sup>     |
|   | 破损深度 (Damage depth)                         | ≤0.3mm              | ≤0.5mm                  |
| 实际使用中无有害毛刺、裂纹、气孔等 (The actual use of no harmful burr, cracks, holes, etc) |   |                     |                         |

**6. 检验方法 INSPECTION METHOD:**

按MIL-STD-105E，一次正常抽样，检查水准II，AQL符合下列标准 (According to MIL-STD-105E, a normal sampling, Inspection standards II, AQL meet the following criteria) :

|   | 合格质量水准AQL<br>(Acceptable quality level AQL) | 检查项目 (Inspection Items)           |
|---|---|-----------------------------------|
| A | 0.25  | 电气特性 (Electrical Characteristics) |
| B | 0.65  | 外观尺寸 (Appearance Size)            |

**7. 包装 PACKAGING:**

内包装采用PE袋或保利龙，外包装采用纸箱，每箱产品外面都贴上产品标签 (包括品名、数量、检验员、生产日期)。

PE bag or inside the packaging with styrofoam, packaging with carton products are labeled outside the product label (including the name, quantity, inspectors, production date).

|                   |                  |                   |
|-------------------|------------------|-------------------|
| 批准<br>APPROVED BY | 审核<br>CHECKED BY | 拟制<br>PREPARED BY |
|                   |                  |                   |

|                |     |                  |  |               |    |
|----------------|-----|------------------|--|---------------|----|
| 客户<br>CUSTOMER | 鑫源洋 | 客户料号<br>CUSTOMER |  | 版本号<br>REV NO | A0 |
|----------------|-----|------------------|--|---------------|----|

|         |                |            |           |  |  |
|---------|----------------|------------|-----------|--|--|
| DDK P/N | EE18/15/6-JP95 | 日期<br>DATE | 2017/9/28 |  |  |
|---------|----------------|------------|-----------|--|--|

| 项目(Project)           | A     | B    | C    | D    | E     | F    | PC(w) | AL(nH/N <sup>2</sup> ) |
|-----------------------|-------|------|------|------|-------|------|-------|------------------------|
| 中心<br>Center<br>value | 18.30 | 7.50 | 6.00 | 5.50 | 12.40 | 4.15 | 0.70  | 2800                   |
| 上限<br>Limit           | 18.60 | 7.70 | 6.10 | 5.65 |       | 4.30 | MAX   | 3500                   |
| 下限<br>Lower limit     | 18.00 | 7.30 | 5.75 | 5.35 | MIN   | 4.00 |       | 2100                   |
| 1                     | 18.33 | 7.55 | 6.02 | 5.52 | 12.65 | 4.15 | 0.52  | 2750                   |
| 2                     | 18.35 | 7.54 | 6.03 | 5.51 | 12.62 | 4.18 | 0.54  | 2710                   |
| 3                     | 18.32 | 7.52 | 6.02 | 5.52 | 12.65 | 4.15 | 0.52  | 2730                   |
| 4                     | 18.36 | 7.55 | 6.02 | 5.58 | 12.65 | 4.11 | 0.51  | 2820                   |
| 5                     | 18.32 | 7.55 | 6.01 | 5.52 | 12.63 | 4.17 | 0.51  | 2790                   |
| 6                     | 18.34 | 7.49 | 6.02 | 5.51 | 12.65 | 4.12 |       | 2860                   |
| 7                     | 18.35 | 7.55 | 6.02 | 5.52 | 12.65 | 4.15 |       | 2740                   |
| 8                     | 18.35 | 7.51 | 6.04 | 5.53 | 12.66 | 4.11 |       | 2730                   |
| 9                     | 18.33 | 7.54 | 6.02 | 5.52 | 12.65 | 4.12 |       | 2830                   |
| 10                    | 18.32 | 7.52 | 6.02 | 5.51 | 12.64 | 4.11 |       | 2720                   |
| 平均值                   | 18.34 | 7.53 | 6.02 | 5.52 | 12.65 | 4.14 | 0.52  | 2768                   |
| 判定                    | OK    | OK   | OK   | OK   | OK    | OK   | OK    | OK                     |

量具：数显卡尺 单位 (mm)

Measuring Tool: Digital Caliper: Unit (mm)

测试条件：1KHz/0.30V 10TS 仪器：Chroma-3302 320X(25°C)

Test Conditions: 1 KHz/0.30V 10TS Instruments: Chroma-3302 320X(25°C)

备注 (Remarks) :

|                   |                  |                   |
|-------------------|------------------|-------------------|
| 批准<br>APPROVED BY | 审核<br>CHECKED BY | 拟制<br>PREPARED BY |
|                   |                  |                   |

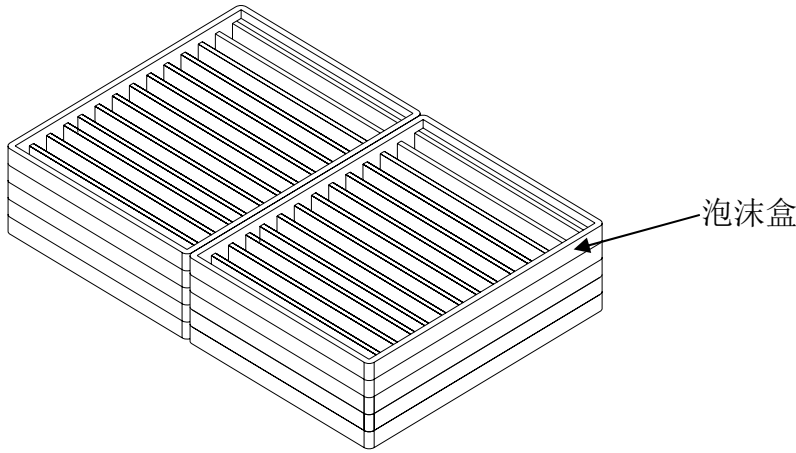
|                |                |                      |            |               |    |
|----------------|----------------|----------------------|------------|---------------|----|
| 客户<br>CUSTOMER | 鑫源洋            | 客户料号<br>CUSTOMER P/N |            | 版本号<br>REV NO | A0 |
| DDK P/N        | EE18/15/6-JP95 |                      | 日期<br>DATE | 2017/9/28     |    |

8. 包装作业规范 SPECIFICATION PACKAGING OPERATIONS:

8.1. 内包装 INNER PACKING

机板规格尺寸及产品摆放方式 (Styrofoam box size and placement).

| 包装材料<br>Stuff Spec | 规格<br>Size | 所需数量<br>Pack Number |
|--------------------|------------|---------------------|
| 泡沫盒<br>Foam box    |            |                     |
| 纸箱<br>Carton box   |            |                     |



8.2. 产品重量 Product weight

单重 Singlet: 6.25g/Set

净重 Net weight:

毛重 Gross weight:

|                   |                  |                   |
|-------------------|------------------|-------------------|
| 批准<br>APPROVED BY | 审核<br>CHECKED BY | 拟制<br>PREPARED BY |
|                   |                  |                   |